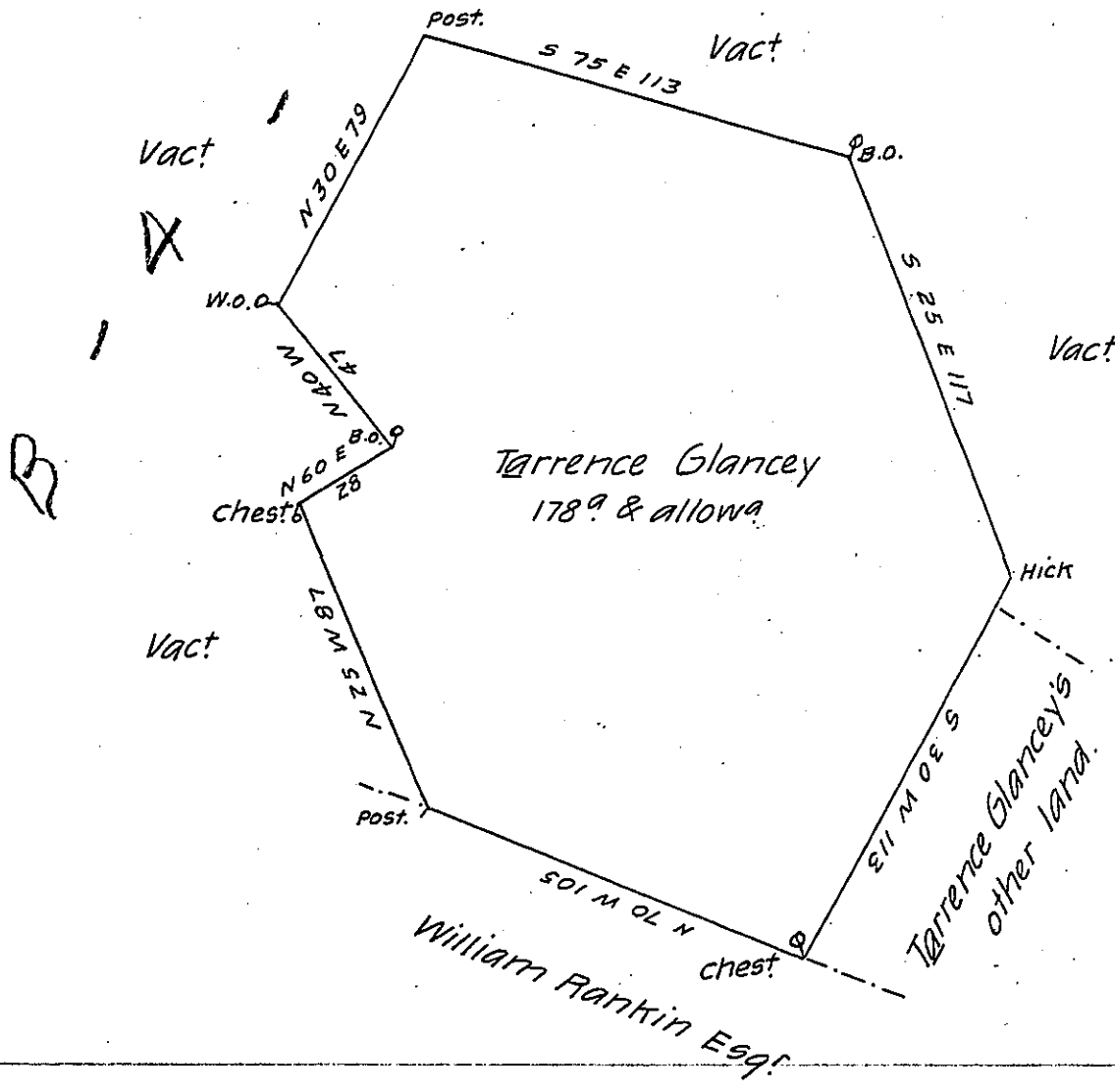


131



A Draught of a Tract of Land Called — Situate in Newberry
 Township in the County of York, Surveyed the 25th day of April 1766,
 To Tarrence Glancey, In pursuance of a Warrant dated the 29th day of
 day of June 1763, Containing one hundred & Seventy Eight acres and
 allowance of Six acres P. Cent for Roads & C^a

To P. Cha^s Lukens D.S.

John Lukens Esq^r

Surveyor General.

IN TESTIMONY that the above is a copy of the original remaining on file in
 the Department of Internal Affairs of Pennsylvania, made
 conformably to an Act of Assembly approved the 16th day of
 February, 1833, I have hereunto set my Hand and caused
 the Seal of said Department to be affixed at Harrisburg,
 this seventeenth day of February 1905.

Samuel P. ...
 Secretary of Internal Affairs.